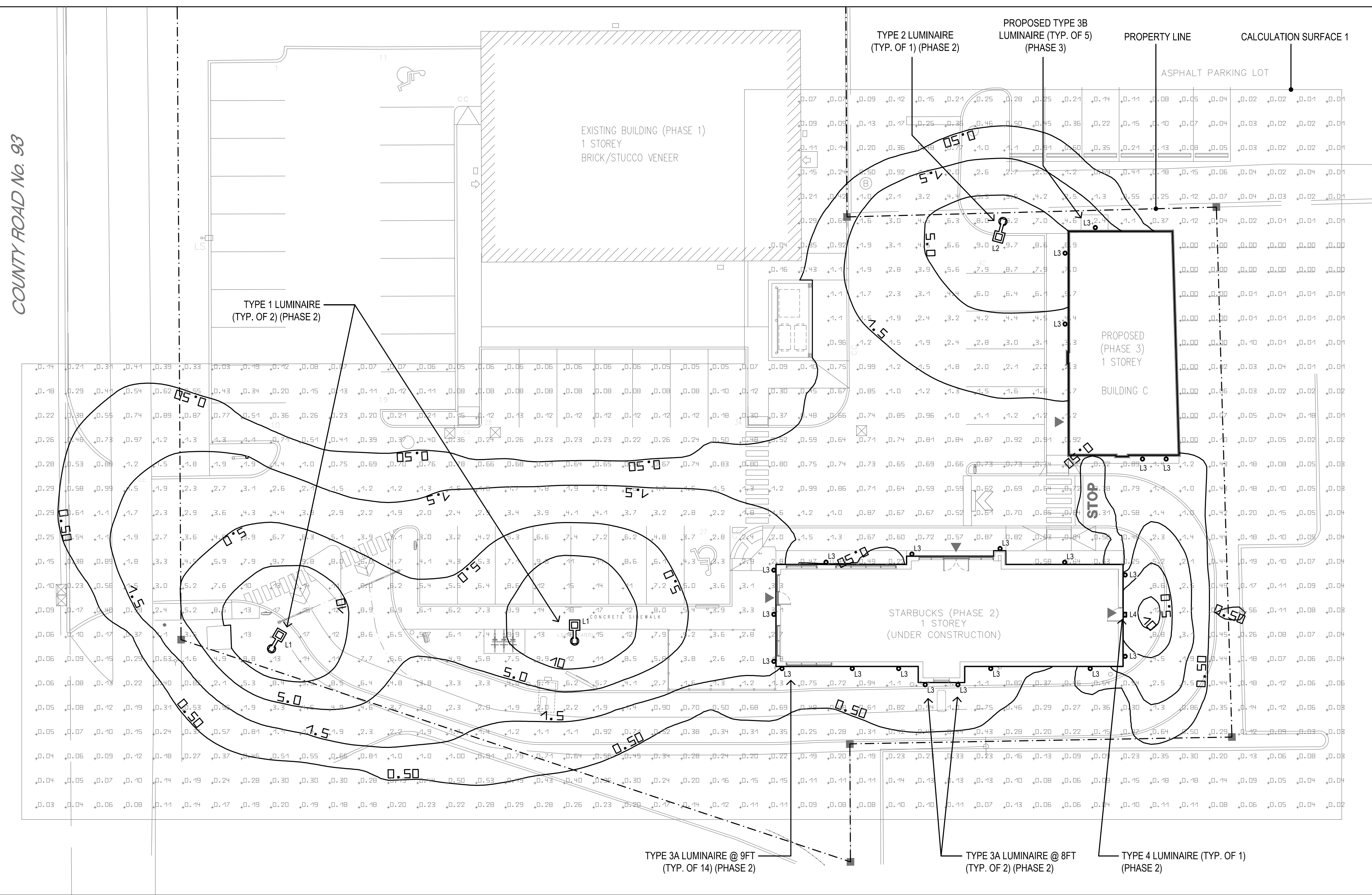


COUNTY ROAD No. 93



PHOTOMETRIC LIGHTING LAYOUT PLAN
SCALE: 1/16" = 1'-0"

PHASE 3 SCOPE OF WORKS

- ALL LIGHTING FIXTURES MARKED "PHASE 2" ARE EXISTING & TO REMAIN.
- PROPOSED "PHASE 3" LIGHTING FIXTURES:
-TYPE L3B
-QUANTITY: 5
-LOCATION: BUILDING C

LUMINAIRE SCHEDULE											
TYPE	MANUFACTURER	DESCRIPTION	MODEL NUMBER	AVERAGE WATTAGE	LUMEN OUTPUT	LIGHT LOSS FACTOR	CCT	DISTRIBUTION TYPE	QUANTITY	MOUNTING HEIGHT	DEVELOPMENT PHASE
L1	CREE	NOCTURA SERIES LED AREA LUMINAIRE	NTA-A-NM-T3-3SL-40K-UL-BZ	230 W	35,000 lm	0.80	40K	3	2	20 FT	2
L2	CREE	NOCTURA SERIES LED AREA LUMINAIRE	NTA-A-NM-T4-19L-40K-UL-BZ	130 W	19,000 lm	0.80	40K	4	1	20 FT	2
L3A	CREE (SEE NOTE)	C-LITE SERIES LED WALL MOUNT CYLINDER LUMINAIRE (SEE NOTE)	C-WM-A-WLCY-6L-40K (SEE NOTE)	22 W	600 lm	0.80	40K	-	16	8-9 FT	2
L3B	CREE (SEE NOTE)	C-LITE SERIES LED WALL MOUNT CYLINDER LUMINAIRE (SEE NOTE)	C-WM-A-WLCY-6L-40K (SEE NOTE)	22 W	600 lm	0.80	40K	-	5	9 FT	3
L4	CREE	NOCTURA SERIES LED WALL MOUNT LUMINAIRE	NTW-A-WM-T3-7L-40K-UL-BZ	46 W	7,000 lm	0.80	40K	3	1	10 FT	2

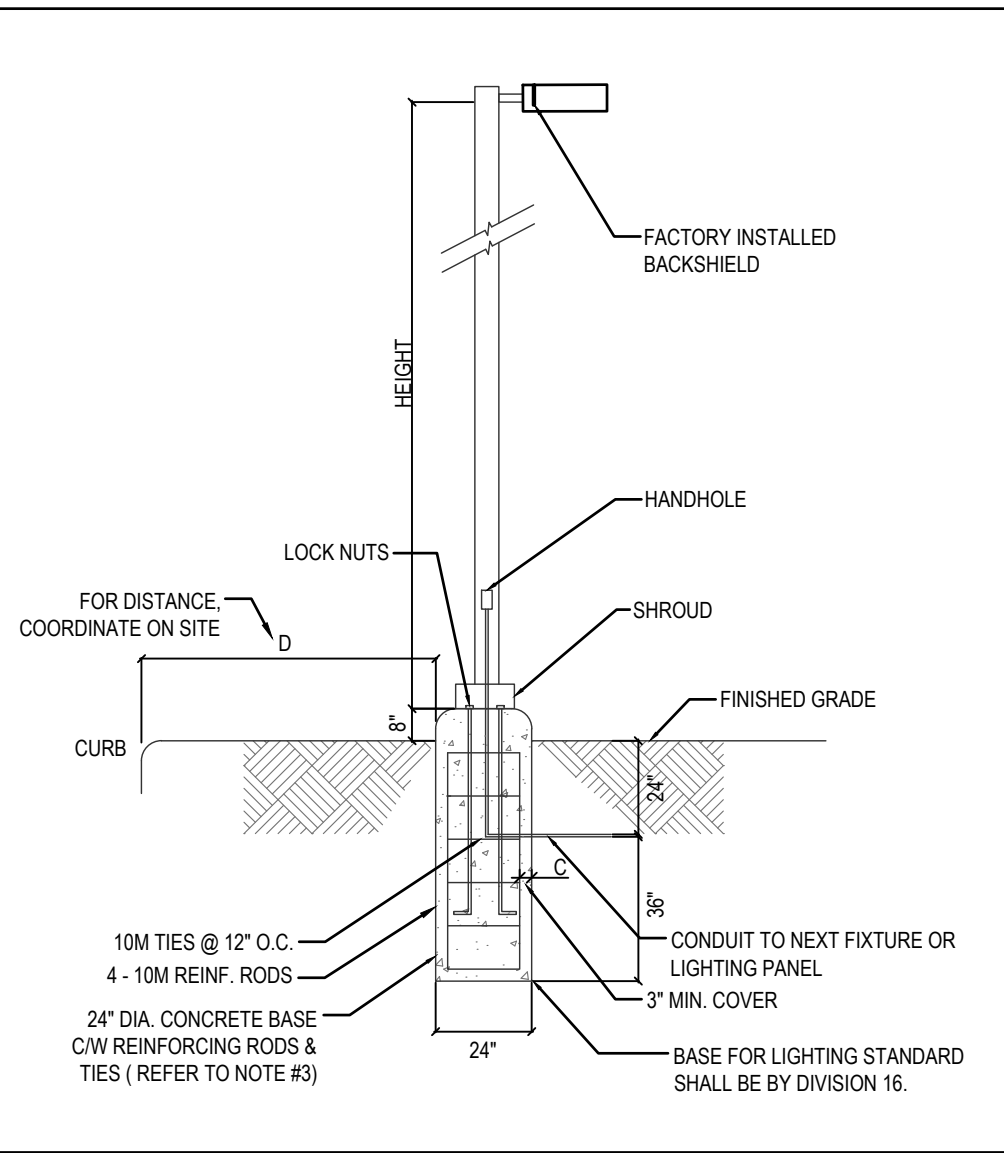
EQUIPMENT AS LISTED OR EQUIVALENT.
L3A & B LED WALL PACKS BY ETUN-DANIELS (REFER TO ARCH. FOR MODEL), AS LISTED ONLY FOR CALCULATION PURPOSE
L4 AS SECURITY LIGHT, PROVIDE CONTROL TO TENANT'S SPACE, MINIMUM 5000 LUMENS

STATISTICS				
NAME	PARAMETER	MIN	MAX	AVERAGE
Calculation surface 1	Perpendicular Illuminance	0.01 fc	17.82 fc	1.8 fc

NOTES:

- ALL CONCRETE IN BASE SHALL BE VIBRATED.
- TOP OF FOUNDATION SHALL BE TRULY LEVEL.
- CONCRETE GRADE SHALL BE 32 MPa CLASS "C2"
- MINIMUM OF 2 SLEEVES REQUIRED FOR EACH CONCRETE FOUNDATION UNLESS OTHERWISE SHOWN.
- CONTRACTOR TO VERIFY OPENING SIZE IN BASE PLATE PRIOR SETTING CONDUIT SLEEVES.
- SUBJECT TO SOIL CONDITIONS.
- BASES FOR LIGHTING STANDARD SHALL BE PROVIDED BY DIV. 16.
- DIVISION 16 SHALL INCLUDE IN CONTRACT COST FOR HIRING OF STRUCTURAL ENGINEER WHO SHALL REVIEW AND APPROVE SIZE OF CONCRETE BASES FOR PARKING LOT LIGHTING STANDARDS PRIOR TO THEIR INSTALLATION.

NOTE:
FACTORY SUPPLIED TEMPLATE MUST BE USED WHEN SETTING ANCHOR BOLTS. EMCO LIGHTING WILL NOT HONOR ANY CLAIM FOR INCORRECT ANCHORAGE PLACEMENT FROM FAILURE TO USE FACTORY SUPPLIED TEMPLATES.



TYPICAL LIGHT POST FULL CUT-OFF LIGHTING
SCALE: N.T.S

Noctura Series LED Area Luminaires

Product Description
The Noctura™ LED Area luminaire minimizes cost of ownership with easy installation, high performance and quality backed by a 5-year limited warranty. The Noctura Series has a coordinated style across area, flood and wall mount luminaires to provide a consistent daytime appearance across a building site or campus. Versatile mounting configurations offer installation flexibility and ease of application for direct pole, terrain or vertical flat surface mounting. Applications: Ideal for both retrofit and new installation: parking area, security, or site pathway applications.

Performance Summary
Lumen Output: Up to 35,000 lumens
Efficacy: Up to 155 LPW
CRI: Minimum 70 CRI
CCT: 3000K, 4000K, 5000K
Limited Warranty: 5 years on luminaire

Accessories
Field-installed:
Backlight Shield: NTA-BSL-1L, NTA-BSL-1L, NTA-BSL-1L, NTA-BSL-1L, NTA-BSL-1L, NTA-BSL-1L
Bore Splice: NTA-BSL-1L, NTA-BSL-1L, NTA-BSL-1L, NTA-BSL-1L, NTA-BSL-1L, NTA-BSL-1L
Cable: NTA-CC-5, NTA-CC-5, NTA-CC-5, NTA-CC-5, NTA-CC-5, NTA-CC-5

Ordering Information
Full product details are provided in the product manual. For more information, refer to the product manual. For more information, refer to the product manual. For more information, refer to the product manual.

Product	Version	Mounting	Optic	Lumen Package**	CCT	Voltage	Color Options
NTA	A	NM	T3	Small	40K	UL	R2
NTA	A	NM	T3	Large	40K	UL	R2
NTA	A	NM	T3	Small	40K	UL	R2
NTA	A	NM	T3	Large	40K	UL	R2

TYPE 1 & 2 LUMINAIRE

Noctura Series LED Wall Mount Luminaires

Product Description
The Noctura™ LED Wall Mount luminaire minimizes cost of ownership with easy installation, high performance and quality backed by a 5-year limited warranty. The Noctura Series has a coordinated style across area, flood and wall mount luminaires to provide a consistent daytime appearance across a building site or campus. The rugged yet lightweight aluminum housing and mounting base are designed for easy installation of a variety of luminaire styles. Requires 2" and 4" octagonal, single gang vertical or horizontal mounts. Luminaires T1, L1, & L2 allow for through-wired or conduit entry from the top, bottom, sides and rear. Applications: Ideal for both retrofit and new installation: building facade, security and general lighting applications.

Performance Summary
Lumen Output: Up to 22,000 lumens
Efficacy: Up to 154 LPW
CRI: Minimum 70 CRI
CCT: 3000K, 4000K, 5000K
Limited Warranty: 5 years on luminaire

Accessories
Field-installed:
Cover Cap: NTA-CC-1L, NTA-CC-1L, NTA-CC-1L, NTA-CC-1L, NTA-CC-1L, NTA-CC-1L
Bore Splice: NTA-BSL-1L, NTA-BSL-1L, NTA-BSL-1L, NTA-BSL-1L, NTA-BSL-1L, NTA-BSL-1L
Cable: NTA-CC-5, NTA-CC-5, NTA-CC-5, NTA-CC-5, NTA-CC-5, NTA-CC-5

Ordering Information
Full product details are provided in the product manual. For more information, refer to the product manual. For more information, refer to the product manual. For more information, refer to the product manual.

Product	Version	Mounting	Optic	Lumen Package**	CCT	Voltage	Color Options
NTW	A	NM	T3	Small	40K	UL	R2
NTW	A	NM	T3	Large	40K	UL	R2
NTW	A	NM	T3	Small	40K	UL	R2
NTW	A	NM	T3	Large	40K	UL	R2

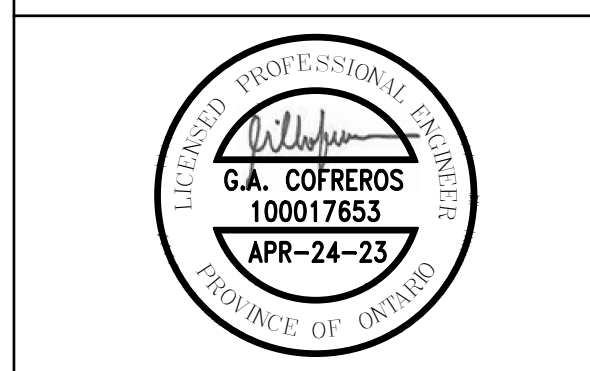
TYPE 4 LUMINAIRE

REVISIONS

NO.	DATE	DESCRIPTION
1		
2		
3		
2		
1	APR 2023	ISSUED FOR SPA

ISSUED

DESIGNER:
GAC ENGINEERING SERVICES INC.
1080 TAPSCOTT RD UNIT 18
TORONTO, ON M1X 1E7
OFFICE No. - (416) 292-0527
CELL No. - (416) 710-8274
gac.engineering@yahoo.ca



DRAWING NOTES:

- THE GENERAL CONTRACTOR SHALL CHECK AND VERIFY DIMENSIONS ON SITE AND REPORT ERRORS AND OMISSIONS.
- DRAWINGS MUST NOT BE SCALED. DRAWINGS ARE DIAGRAMMATIC CONCEPT OF THE DESIGN.
- CONTRACTOR TO SUBMIT SHOP DRAWINGS FOR CONSISTENCY WITH THE INTENT OF THE DRAWINGS AND SPECIFICATIONS.

CLIENT:

PROJECT TITLE:
PROPOSED PHASE 3
DEVELOPMENT - BUILDING C
9281 COUNTY RD. 93
TOWN OF MIDLAND, ONTARIO

DRAWING TITLE:
PHOTOMETRIC PLAN

DRAWN BY:
A. C.

CHECKED BY:
G. C.

SCALE:
1/16" = 1'-0"

DATE:
APRIL 2023

PROJECT NO.:
023023

DRAWING NO.:
SE-1